



METCHRO

IMAGINING, WORKING, SHINING

LOOKING GOOD FROM THE BACK!

With Metchro's
Back Panels and Back Bumpers Line,
even the rear end of your truck is set
to shine while you work.

- Vast selection of styles and shapes
- Customize with the number and type of lights you wish
- Available in 304 Mirror Finish or 430 Matte Finish
- All made with Metchro's famous seal of guaranteed quality



Direct link to our website!



C7971080



C7971082



C7971084

REAR PANELS / REGULAR

CODE	DESCRIPTION	LIGHTS	LED LIGHT KIT	PROFILE
C7971080	Rear Panel 33.75" x 13.75"	4 x 4" round LED lights + 6 x 2" round LED lights	Holes only	Rectangular
C7971087	Rear Panel 33.75" x 13.75"	4 x 4" round LED lights	Holes only	Rectangular
C7971088	Rear Panel 33.75" x 13.75"	4 x 4" round LED lights + 5 x 2.5" round LED lights	Holes only	Rectangular
C7971004	Rear Panel 33.75" x 13.75"	4 x 4" round LED lights	Holes only	Triangular
C7971006	Rear Panel 33.75" x 13.75"	4 x 4" round LED lights + 6 x 2" round LED lights	Holes only	Triangular
C7971082	Rear Panel 33.75" x 13.75"	4 x 4" round LED lights	Holes only	Thin
C7971084	Rear Panel 33.75" x 13.75"	4 x 4" round LED lights + 6 x 2" round LED lights	Holes only	Thin
C7971099	Rear Panel 33.75" x 13"	4 x 4" round LED lights + 3 x 2.5" round LED lights	Holes only	Thin
C7971008	Rear Panel 33.75" x 13.75"	4 x 6" oval LED lights + 4 x 2.5" round LED lights	Holes only	Thin

REAR PANELS / WIDE

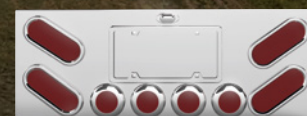
CODE	DESCRIPTION	LIGHT	LED LIGHT KIT	PROFILE
C7971091	Wide Rear Panel 45.6" x 15.25"	4 x 4" round LED lights + 10 x 2" round LED lights	Holes only	Rectangular
C7971091-LEDB	Wide Rear Panel 45.6" x 15.25"	4 x 4" round LED lights + 10 x 2" round LED lights	LED lights kit included	Rectangular
C7971057	Wide Rear Panel 45.75" x 15.5"	9 x 4" round LED lights + 12 x 2" round LED lights	Holes only	Triangular
C7971059	Wide Rear Panel 45.75" x 15.5"	4 x 4" round LED lights + 15 x small oval LED lights	Holes only	Triangular



C7971004-LEDB



C7971006-LEDB



C7971008-LEDB



C7971080-LEDB



C7971082-LED



C7971024



C7971016



C7971009



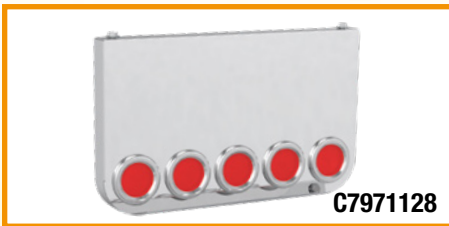
C7971054



C7971114



C7971130



C7971128



C7971124



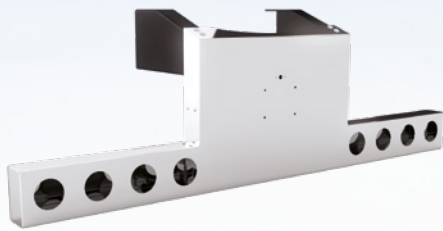
C7971129

BACK PANELS / REGULAR

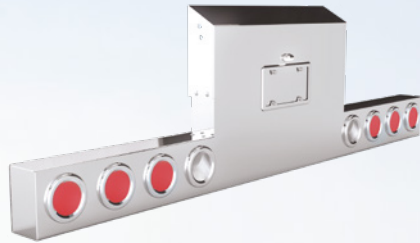
CODE	DESCRIPTION	LIGHTS	LED LIGHT KIT	LICENCE PLATE HOLES	PROFILE
C7971024	Central Back Panel Round Corner 34" x 12.25" x 2.5"	4 x 4" round LED lights	Holes only	No	Rectangular
C7971016	Central Back Panel Round Corner 34" x 12.25" x 2.5"	2 x 4" round LED lights	Holes only	Yes	Rectangular
C7971009	Central Back Panel Round Corner 34" x 12.25" x 2.5"	4 x 4" round LED lights	Holes only	Yes	Rectangular
C7971054	Central Back Panel Round Corner 34" x 12.25" x 2.5"	4 x 4" round LED lights + 6 x 2" round LED lights	Holes only	Yes	Rectangular
C7971114	Central Back Panel Round Corner 34" x 12.25" x 2.5" with Central Recess (13" x 6") for Air line and Electric Connexions	Blank	N/A	No	Rectangular
C7971130	Central Back Panel Round Corner 34" x 12.25" x 2.5"	5 x 4" round LED lights	Holes only	No	Rectangular

BACK PANELS / LONG DROP

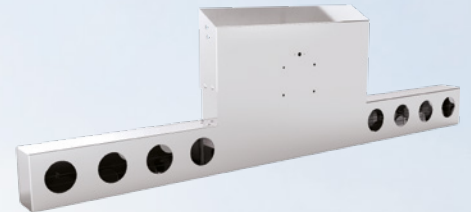
C7971124	Central Back Panel Round Corner 34" x 20" x 2.5"	5 x 4" round LED lights	Holes only	No	Rectangular
C7971128	Central Back Panel Round Corner 34" x 20" x 2.5"	5 x 4" round LED lights + 4 x 3/4" round LED lights (under)	Holes only	No	Rectangular
C7971129	Central Back Panel Round Corner 34" x 20" x 2.5"	5 x 4" round LED lights + 4 x 3/4" round LED lights (under)+ 8 x 4 3/4" round LED lights (sides)	Holes only	No	Rectangular



S7173002



S7273005



S7273006



C7973004



C7973005

BACK BUMPER

CODE	DESCRIPTION	LIGHTS
S7173002	Rear Panel Full Width / 30" Wide Rear Reverse T-Bar, Back Panel and Frame Cover Peterbilt 389 2020&UP	8 X 4" Laser Cut Holes
S7273005	Rear Panel Full Width / Regular Drop 23" Kenworth W900 2008 &UP	8 X 4" Laser Cut Holes
S7273006	Rear Panel VIKING SERIE Full Width / SUPER Long Drop 28" Kenworth W900 2008 &UP	8 X 4" Laser Cut Holes
C7973004	Rear Panel FULL WIDTH UNIVERSAL / Regular Drop 19"	8 X 4" Laser Cut Holes Note: LED Light Kit not included
C7973005	Rear Panel FULL WIDTH UNIVERSAL / Regular Drop 19"	8 X 4" + 5X 2.5" Laser Cut Holes Note: LED Light Kit not included



S7971115

S7971116

S7971117

UNIVERSAL REAR LIGHT BAR

	CODE	DESCRIPTION	LIGHTS
Back cover welded	S7971115	UNIVERSAL Rear Light Bar Full Width 95" x 7" / Made with SS304 Grade 11 ga / Drilling required for installation	8 X 4" Round Laser Cut Holes
	S7971116	UNIVERSAL Rear Light Bar Full Width 95" x 7" / Made with SS304 Grade 11 ga / Drilling required for installation	12 X 4" Round Laser Cut Holes
	S7971117	UNIVERSAL Rear Light Bar Full Width 95" x 7" / Made with SS304 Grade 11 ga / Drilling required for installation	15 X 4" Round Laser Cut Holes
Back cover removable	S7971121	UNIVERSAL Rear Light Bar Full Width 95" x 7" / Made with SS304 Grade 11 ga / Drilling required for installation	8 X 4" Round Laser Cut Holes
	S7971122	UNIVERSAL Rear Light Bar Full Width 95" x 7" / Made with SS304 Grade 11 ga / Drilling required for installation	12 X 4" Round Laser Cut Holes
	S7971123	UNIVERSAL Rear Light Bar Full Width 95" x 7" / Made with SS304 Grade 11 ga / Drilling required for installation	15 X 4" Round Laser Cut Holes