

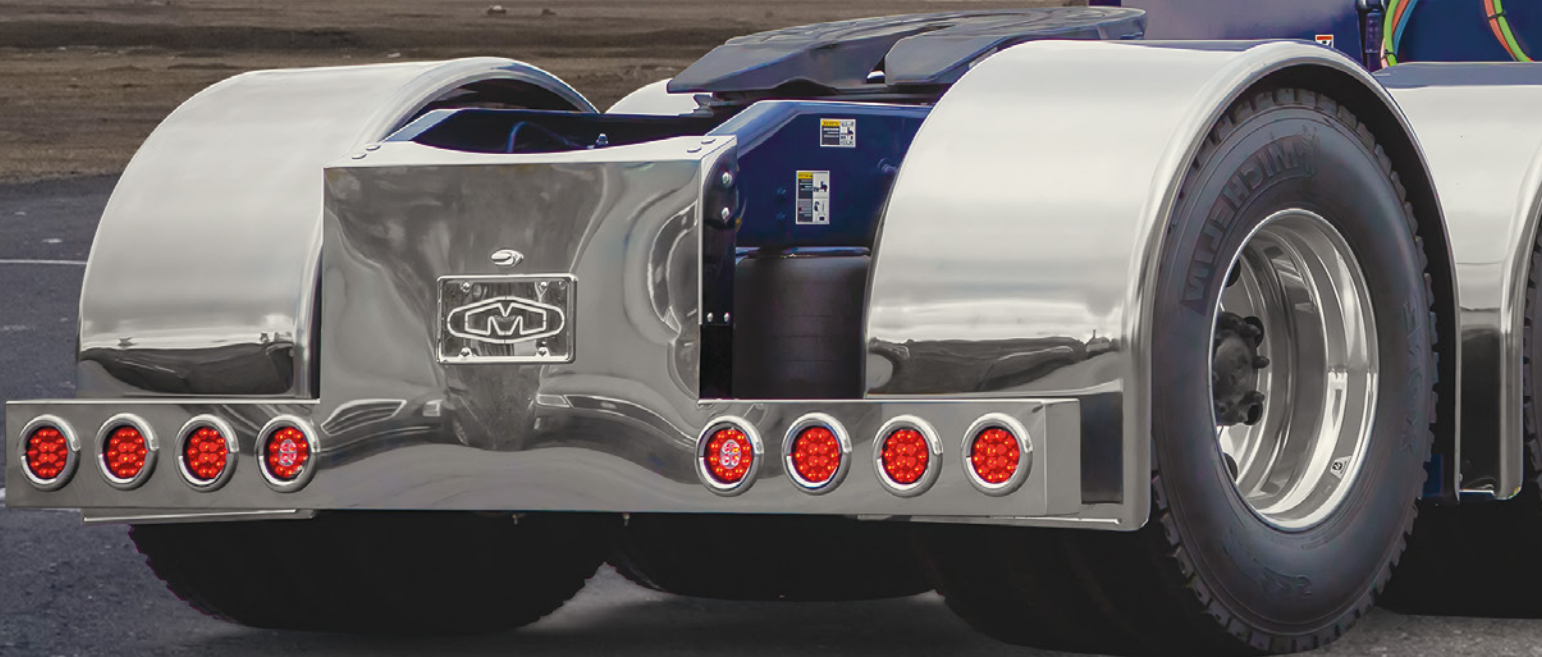


**METCHRO**  
IMAGINING, WORKING, SHINING

# LOOKING GOOD FROM THE BACK!

With Metchro's  
**Back Panels and Back Bumpers Line,**  
even the rear end of your truck is set  
to shine while you work.

- Vast selection of styles and shapes
- Customize with the number and type of lights you wish
- Available in 304 Mirror Finish or 430 Matte Finish
- All made with Metchro's famous seal of guaranteed quality





C7971080



C7971082



C7971084

### REAR PANELS / REGULAR

CODE	DESCRIPTION	LIGHTS	LED LIGHT KIT	PROFILE
C7971080	Rear Panel 33.75" x 13.75"	4 x 4" round LED lights + 6 x 2" round LED lights	Holes only	Rectangular
C7971087	Rear Panel 33.75" x 13.75"	4 x 4" round LED lights	Holes only	Rectangular
C7971088	Rear Panel 33.75" x 13.75"	4 x 4" round LED lights + 5 x 2.5" round LED lights	Holes only	Rectangular
C7971004	Rear Panel 33.75" x 13.75"	4 x 4" round LED lights	Holes only	Triangular
C7971006	Rear Panel 33.75" x 13.75"	4 x 4" round LED lights + 6 x 2" round LED lights	Holes only	Triangular
C7971082	Rear Panel 33.75" x 13.75"	4 x 4" round LED lights	Holes only	Thin
C7971084	Rear Panel 33.75" x 13.75"	4 x 4" round LED lights + 6 x 2" round LED lights	Holes only	Thin
C7971099	Rear Panel 33.75" x 13"	4 x 4" round LED lights + 3 x 2.5" round LED lights	Holes only	Thin
C7971008	Rear Panel 33.75" x 13.75"	4 x 6" oval LED lights + 4 x 2.5" round LED lights	Holes only	Thin

### REAR PANELS / WIDE

CODE	DESCRIPTION	LIGHT	LED LIGHT KIT	PROFILE
C7971091	Wide Rear Panel 45.6" x 15.25"	4 x 4" round LED lights + 10 x 2" round LED lights	Holes only	Rectangular
C7971091-LEDB	Wide Rear Panel 45.6" x 15.25"	4 x 4" round LED lights + 10 x 2" round LED lights	LED lights kit included	Rectangular
C7971057	Wide Rear Panel 45.75" x 15.5"	9 x 4" round LED lights + 12 x 2" round LED lights	Holes only	Triangular
C7971059	Wide Rear Panel 45.75" x 15.5"	4 x 4" round LED lights + 15 x small oval LED lights	Holes only	Triangular



C7971004-LEDB



C7971006-LEDB



C7971008-LEDB



C7971080-LEDB



C7971082-LED





C7971024



C7971016



C7971009



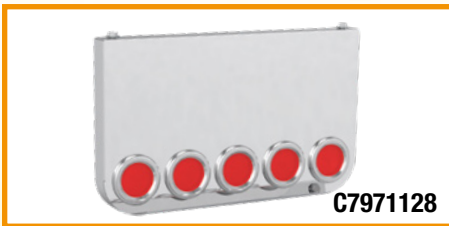
C7971054



C7971114



C7971130



C7971128



C7971124



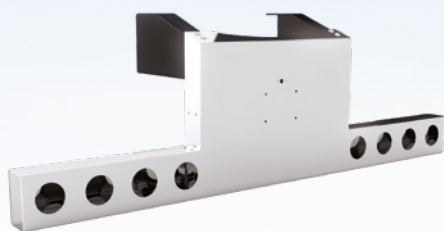
C7971129

**BACK PANELS / REGULAR**

CODE	DESCRIPTION	LIGHTS	LED LIGHT KIT	LICENCE PLATE HOLES	PROFILE
C7971024	Central Back Panel Round Corner 34" x 12.25" x 2.5"	4 x 4" round LED lights	Holes only	No	Rectangular
C7971016	Central Back Panel Round Corner 34" x 12.25" x 2.5"	2 x 4" round LED lights	Holes only	Yes	Rectangular
C7971009	Central Back Panel Round Corner 34" x 12.25" x 2.5"	4 x 4" round LED lights	Holes only	Yes	Rectangular
C7971054	Central Back Panel Round Corner 34" x 12.25" x 2.5"	4 x 4" round LED lights + 6 x 2" round LED lights	Holes only	Yes	Rectangular
C7971114	Central Back Panel Round Corner 34" x 12.25" x 2.5" with Central Recess (13" x 6") for Air line and Electric Connexions	Blank	N/A	No	Rectangular
C7971130	Central Back Panel Round Corner 34" x 12.25" x 2.5"	5 x 4" round LED lights	Holes only	No	Rectangular

**BACK PANELS / LONG DROP**

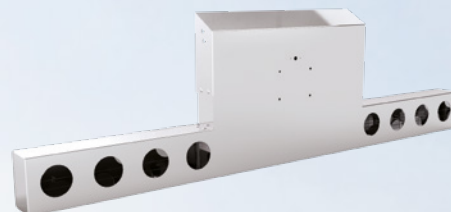
C7971124	Central Back Panel Round Corner 34" x 20" x 2.5"	5 x 4" round LED lights	Holes only	No	Rectangular
C7971128	Central Back Panel Round Corner 34" x 20" x 2.5"	5 x 4" round LED lights + 4 x 3/4" round LED lights (under)	Holes only	No	Rectangular
C7971129	Central Back Panel Round Corner 34" x 20" x 2.5"	5 x 4" round LED lights + 4 x 3/4" round LED lights (under)+ 8 x 4 3/4" round LED lights (sides)	Holes only	No	Rectangular



S7173002



S7273005



S7273006



C7973004



C7973005

### BACK BUMPER

CODE	DESCRIPTION	LIGHTS
S7173002	Rear Panel Full Width / 30" Wide Rear Reverse T-Bar, Back Panel and Frame Cover Peterbilt 389 2020&UP	8 X 4" Laser Cut Holes
S7273005	Rear Panel Full Width / Regular Drop 23" Kenworth W900 2008 &UP	8 X 4" Laser Cut Holes
S7273006	Rear Panel VIKING SERIE Full Width / SUPER Long Drop 28" Kenworth W900 2008 &UP	8 X 4" Laser Cut Holes
C7973004	Rear Panel FULL WIDTH UNIVERSAL / Regular Drop 19"	8 X 4" Laser Cut Holes Note: LED Light Kit not included
C7973005	Rear Panel FULL WIDTH UNIVERSAL / Regular Drop 19"	8 X 4" + 5X 2.5" Laser Cut Holes Note: LED Light Kit not included



S7971115

S7971116

S7971117

### UNIVERSAL REAR LIGHT BAR

	CODE	DESCRIPTION	LIGHTS
Back cover welded	S7971115	UNIVERSAL Rear Light Bar Full Width 95" x 7" / Made with SS304 Grade 11 ga / Drilling required for installation	8 X 4" Round Laser Cut Holes
	S7971116	UNIVERSAL Rear Light Bar Full Width 95" x 7" / Made with SS304 Grade 11 ga / Drilling required for installation	12 X 4" Round Laser Cut Holes
	S7971117	UNIVERSAL Rear Light Bar Full Width 95" x 7" / Made with SS304 Grade 11 ga / Drilling required for installation	15 X 4" Round Laser Cut Holes
Back cover removable	S7971121	UNIVERSAL Rear Light Bar Full Width 95" x 7" / Made with SS304 Grade 11 ga / Drilling required for installation	8 X 4" Round Laser Cut Holes
	S7971122	UNIVERSAL Rear Light Bar Full Width 95" x 7" / Made with SS304 Grade 11 ga / Drilling required for installation	12 X 4" Round Laser Cut Holes
	S7971123	UNIVERSAL Rear Light Bar Full Width 95" x 7" / Made with SS304 Grade 11 ga / Drilling required for installation	15 X 4" Round Laser Cut Holes